

PART OF THE N.W. 1/4, OF SECTION 28, T.7N., R.1W., S.L.B. & M.

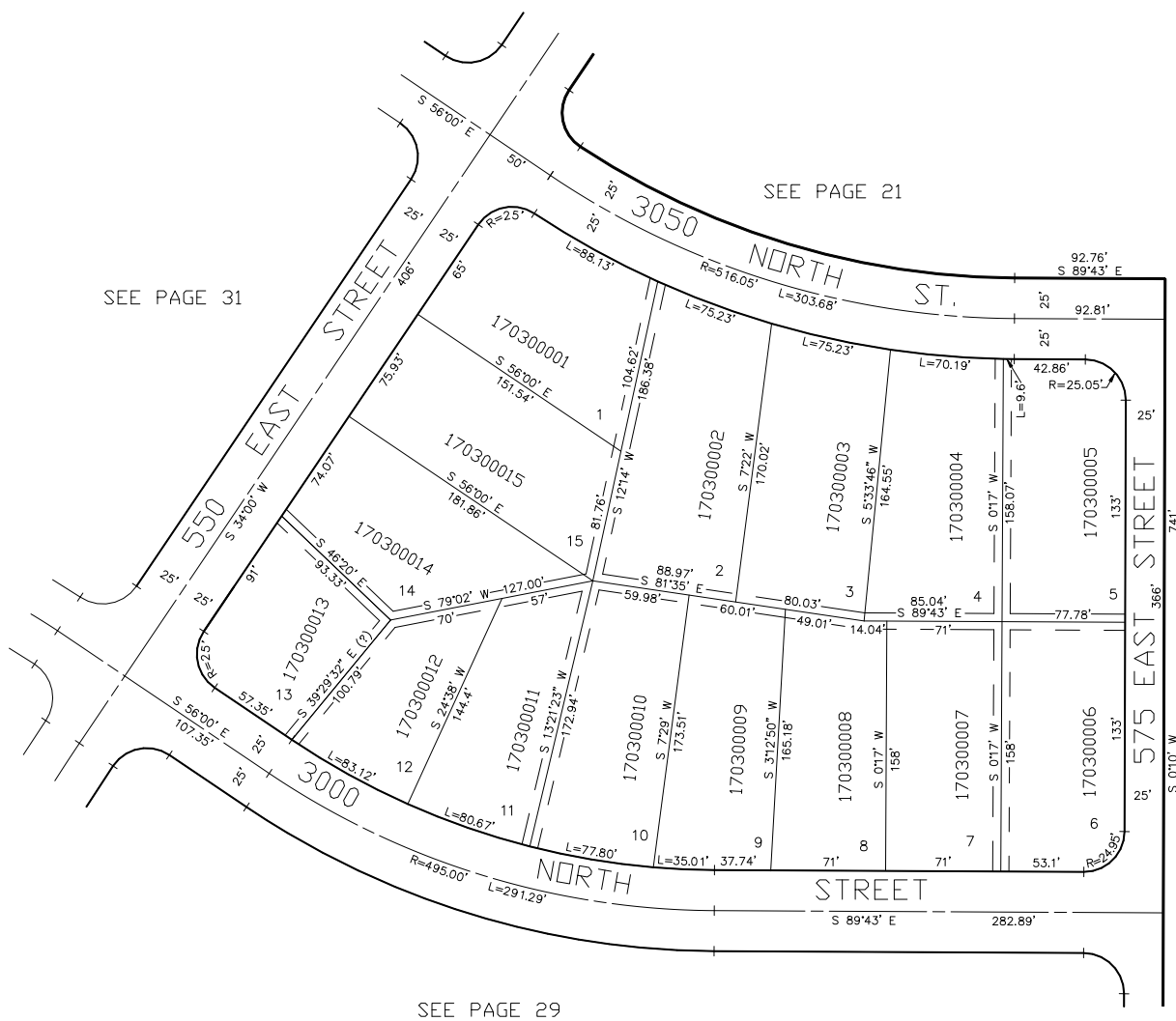
LOMOND ACRES SUBDIVISION

BLOCK 3

TAXING UNIT: 10

IN NORTH OGDEN CITY

SCALE 1" = 60'



SEE PAGE 20

FOR COMPLETE ENG DATA SEE
ORIGINAL DEDICATION PLAT IN
BOOK 9, PAGE 101 OF RECORDS.

5' UTILITY & DRAINAGE EASEMENTS EACH
SIDE OF PROPERTY LINES AS INDICATED
BY DASHED LINES EXCEPT AS OTHERWISE
SHOWN.